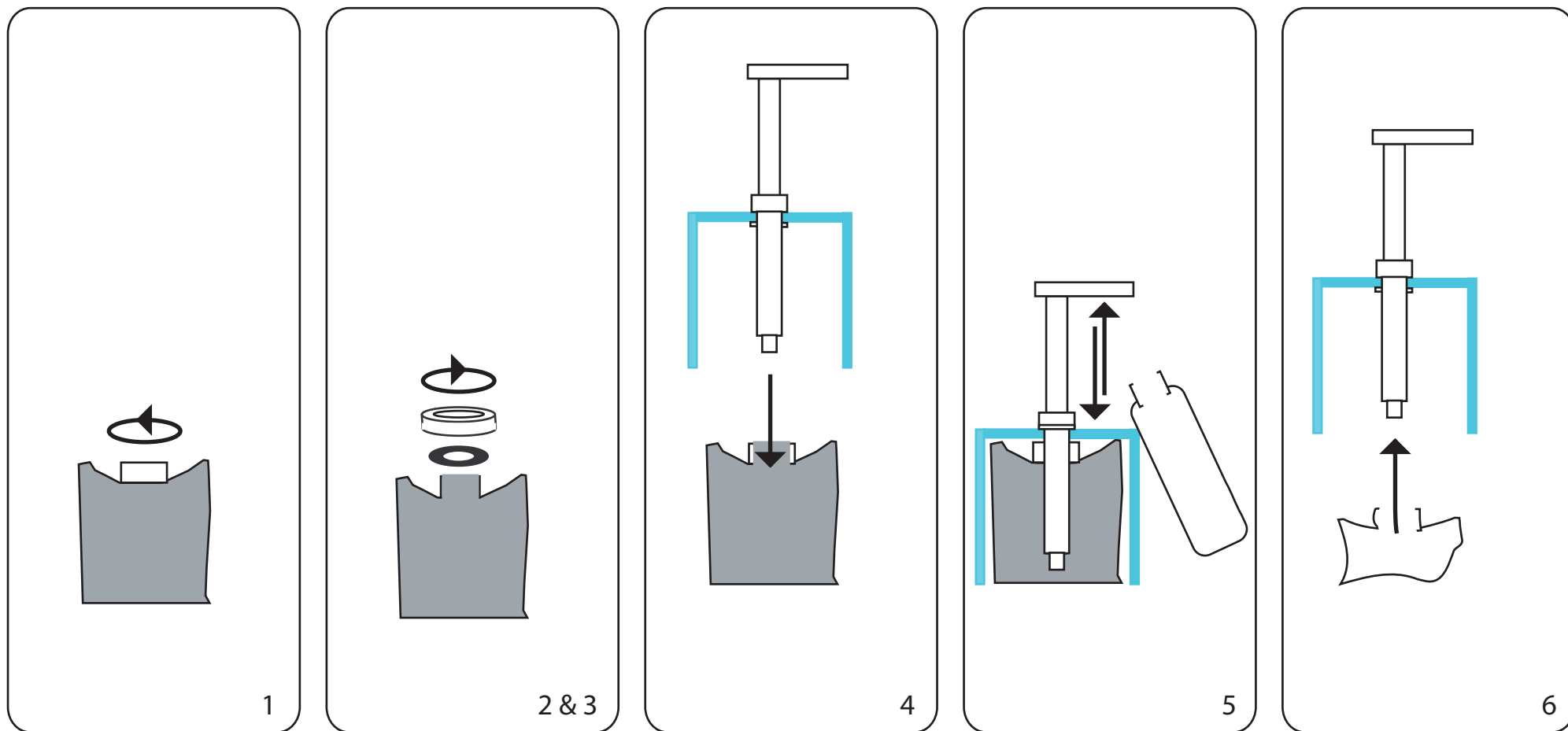


Gel Frame & Dispenser (GEL5000FRP) Instructions for use:

- 1) Remove screw lid from a 5L Anagel container.
- 2) Place black round rubber washer on the rim of the opening of the gel container.
- 3) Screw closure ring over the round rubber washer.
- 4) Place gel frame over the gel container and insert pump shaft into the gel through the black washer and closing ring.
- 5) With one hand rest the 250ml empty bottle against the side of the frame and with the other hand push down on the pump ensuring that the gel is pumped into the empty bottle. Alternatively hold the 250ml empty bottle at the tip of the pump spout whilst pumping to ensure the gel dispenses into the bottle.
- 6) To remove the frame from the 5L gel pouch when it is empty, pull the whole frame unit upwards whilst holding the empty pouch in the other hand.



Cleaning:
The whole pump assembly can be cleaned in hot soapy water. Ensure that the pump is cleaned thoroughly placing the whole unit in hot soapy water and pumping water through.